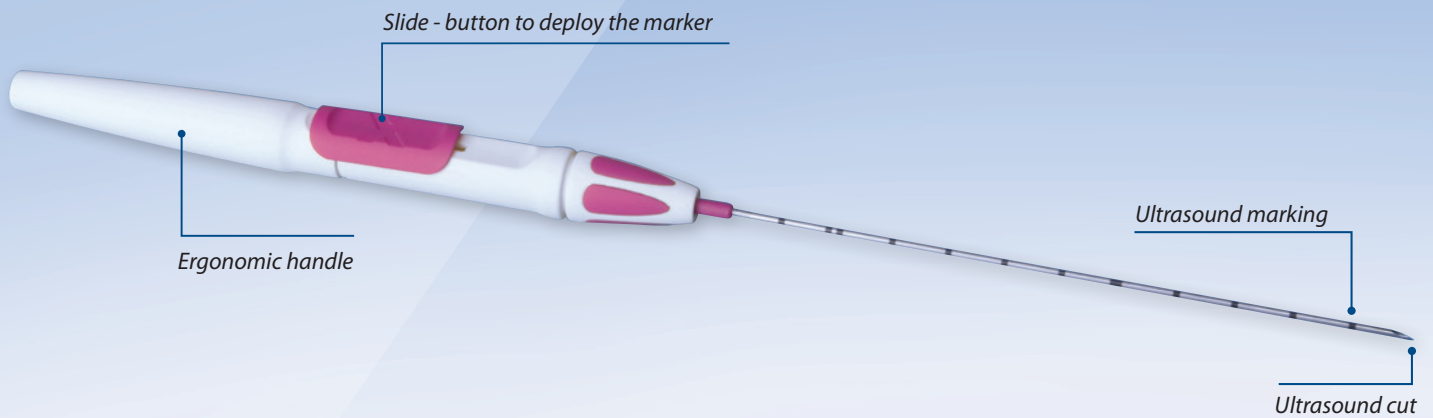


Tumark Professional X-Shape

The new marker system



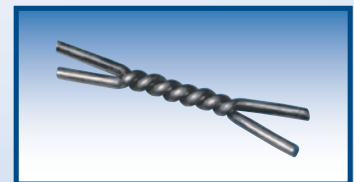
Use:

- Marking after removal of tumor
- Marking of suspicious lesions
- Tumor marking during neoadjuvant chemotherapy
- For marking the biopsy site
- Orientation for planning radiation therapy

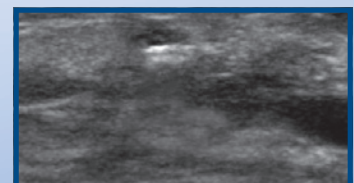
Advantages at a glance:

- Clever 3D marker design enables firm anchorage in the tissue and increases visibility in all positions
- optimal visibility for ultrasound, mammography and MRI
- Marker is MRI compatible up to 3 Tesla
- The marker is approved as implantable material (Nitinol)
- Ergonomic handle for single-handed operation
- Simultaneous use with Tumark Professional (U-Marker) enables better differentiation during therapy

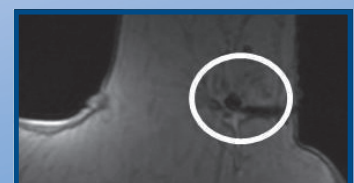
The marker is supplied preloaded



clip - marker x-shape



Ultrasound



MRI

Order-No.	Gauge	Diameter	Length
271 549	18 G	1,2 mm	100 mm
271 551	18 G	1,2 mm	120 mm



Rheinstr. 7d · D-14513 Teltow · Germany
 Tel. +49 (0) 3328 30 76-0 · Fax +49 (0) 3328 30 76-99
 info@somatex.com · www.somatex.com

SOMATEX[®]
 MEDICAL TECHNOLOGIES GMBH